

Introduction

The purpose of this sample test was to demonstrate and examine the accuracy of our HDI Compact System in capturing the dimensions of a 1 inch gauge block.

Setup

A 1 inch gauge block was scanned using our HDI C210 system mounted on a large tripod. Two sides of the gauge block were scanned, then aligned and measured using the coordinate tools within Flexscan3D. Modelling clay was used on the object to facilitate alignment by adding geometry. Additionally, the object was sprayed with developer spray to reduce surface reflection.

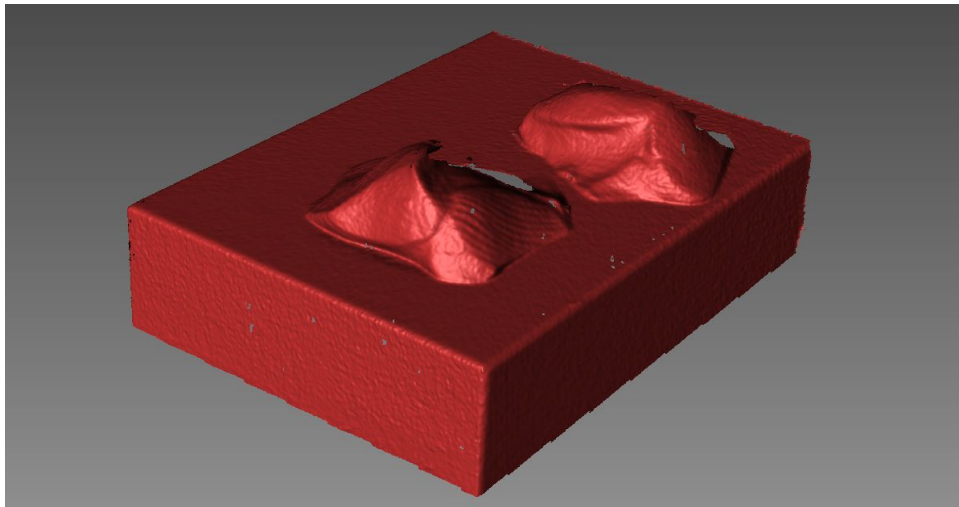


Figure 1 - Scanned Object

Measurement Data

Actual Measurement	25.40 mm
Object Scan Measurement	25.37 mm

Figure 2 - Measured Data

Measured Scan

The final scan is composed of a combination and alignment of three individual scans. The final scan data can be accessed here:

<https://drive.google.com/file/d/1LyqKwpAS2E8L7PNeqzGq-cOtX6WjsHLC/view?usp=sharing>

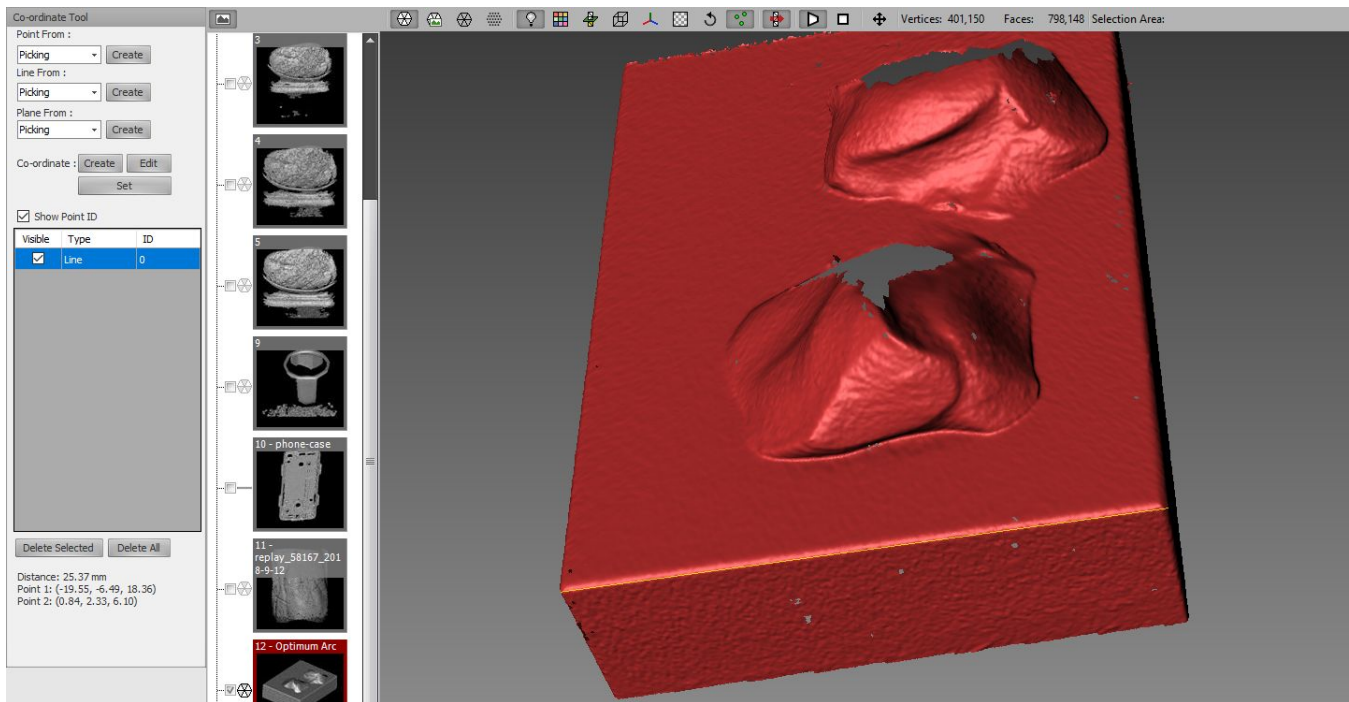


Figure 3 - Measurement Image